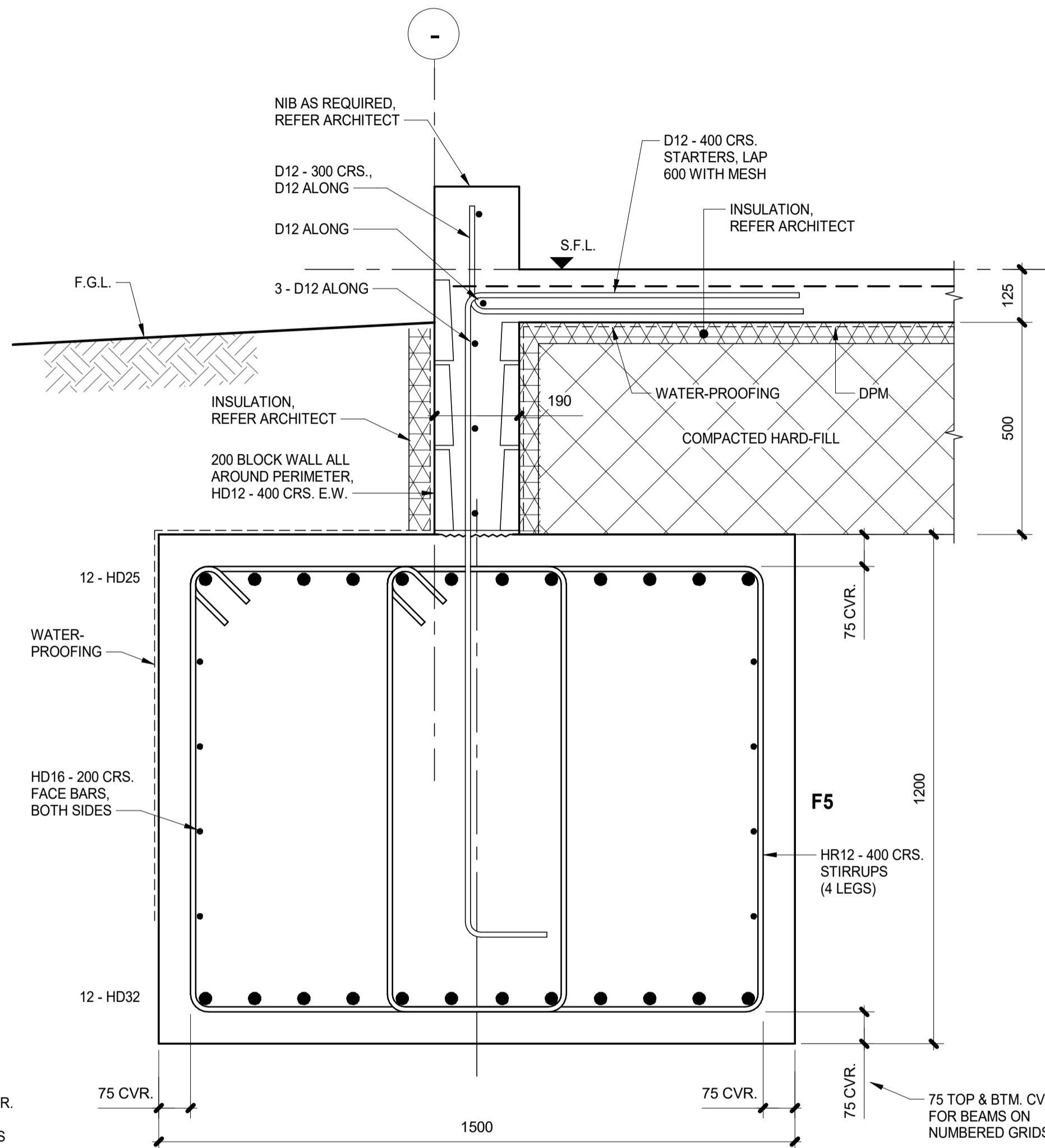
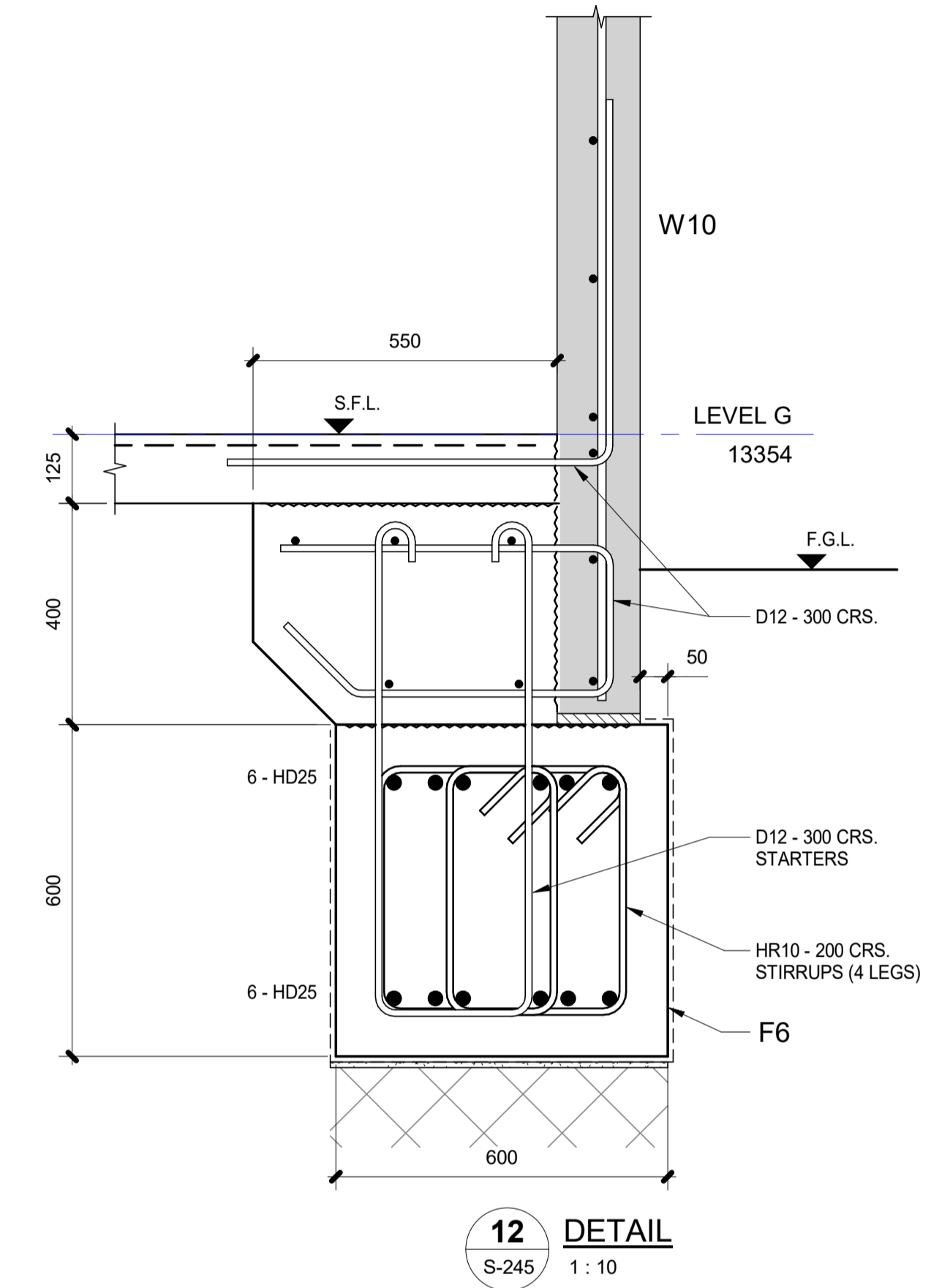


10 DETAIL - TYPICAL STEP
S-101 1:10



11 DETAIL - BEAM TYPE F5
S-101 1:10



12 DETAIL
S-245 1:10

REV	DATE	AMENDMENT	BY
M	14.03.24	BUILDING CONSENT (BLOCK 'B')	WRB
L	16.02.24	UPDATED CONSENT (BLOCK 'A')	WRB
K	21.12.23	90% COORDINATION (BLK 'A')	WRB
J	20.11.23	BUILDING CONSENT (BLOCK 'A')	WRB
H	31.10.23	BUILDING CONSENT (BLOCK 'A')	WRB
G	23.06.23	100% DEVELOPED DESIGN	WRB
F	01.06.23	BLDG. 'A' FOUND. CONSENT.	WRB
E	24.05.23	50% DEVELOPED DESIGN	WRB
D	08.05.23	A FOUND. CONSENT AMEND.	WRB
C	14.04.23	B FOUND. CONSENT AMEND	DJW
B	20.12.22	REVISED FOUND. CONSENT	WRB
A	30.11.22	FOUNDATION CONSENT	WRB

MSC
MSC Consulting Group Ltd
Civil & Structural Engineers
www.msc.co.nz

COPYRIGHT
ALL RIGHTS RESERVED - NO PART OF THIS DOCUMENT
MAY BE REPRODUCED IN ANY FORM WITHOUT WRITTEN
APPROVAL FROM MSC CONSULTING GROUP LIMITED

CLIENT

TE WHĀNAU O WAIPAREIRA
KOKIRITIA I ROTO I TE KOTAHITANGA
Progressively Act in Unity

CONSENT

KAUMATUA HOUSING
30 HOSPITAL ROAD, SUPER LOT A1.

CONCRETE DETAILS - SHEET 2

DESIGNED P.W.	DATE OCT. 2022
DRAWN W.R.B.	CHECKED P.W.
A1 SCALE 1:10	A3 SCALE

DO NOT SCALE - IF IN DOUBT ASK

Proj No: **42642T**

DWG No: **S-302** REVISION: **M**

13/03/2024 11:37:29 AM